

TECHNICAL SPECIFICATIONS

Thickness	2.3mm
Core material	HDF
Panel Size	8ft (2440mm) x 4ft (1220mm)
Designs	More than 36 Designs in Raw Finish
Available in	Raw Unpolished
Polish Type	Dual Tone with Antique Effect / DUCO Finish / PU Finish can be given.
Fixing	Similar to the way veneer is fixed.
Applications	Wall/Ceiling Cladding, Shutter Cladding & Furniture Embellishments

WHY ACTION TESA EMBOSSED PANELS

- Action Tesa Embossed on HDF sheet at its semi cure stage while other embossed designs are available on MDF sheet.
- Action Tesa has more depth in Embossed HDF sheets and the depth is normally higher than 0.6mm whereas the others are just 0.2, 0.3mm. This results in a much more beautiful panel on Tesa HDF.
- Action Tesa uses European technology to make the Embossed Panels and all the Embossed Molds are imported from Europe with better Chrome Plating to give a smoother and glossy finish on the surface and the sharpness in edges of Embossing is more in compare with Local panels available.
- The density of the Tesa product is more than 850kg/m3 to ensure that consumption of paint is to be minimize while the other Embossed Panels consumes more paint. The back side of our Embossed is having rough surface so that bonding is better when glue applied and fixed on any substrate.
- All raw material being manufactured by Action Tesa itself while other manufacturers buy the MDF sheets from different channel, which resulting variation in quality. Action Tesa used consistent quality of raw material to make it's Embossed Sheet.
- Action tesa HDF Embossed Panels are ideally suitable for polishing, painting, PVC film pressing, membrane pressing etc.
- Action Tesa is using DOME technology so the moisture content is distributed equally in panels while other panels having high moisture content & moisture is not equally distributed, resulting more complaint. Action Tesa HDF Board which is being specially manufactured in-house with lot of wax so that the paint consumption is much less as compared to any other panel available.
- The molecular structure & IB in Tesa Panels is better than other Embossed Panels because Tesa is Embossing in semi cure (After the Mat formation) while other panels give the Pressure on surface after the MDF get completely cure thus creating destruction in molecular structure.
- Action Tesa has the widest range of more than 38 Designs.



Vol.01-July-2020



www.actiontesa.com

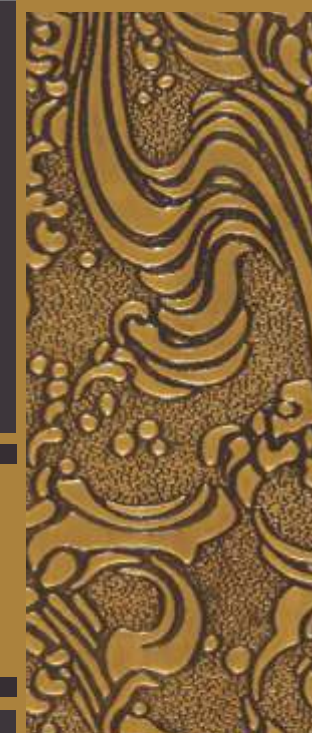
Balaji Action Buildwell

Corporate Office: G-11, Udyog Nagar, Main Rohtak Road, New Delhi-110041 Ph: 011-41120000, 41120032

Customer Care Service: 011-41120018, 41120098  
 cce2@actiontesa.com, cce3@actiontesa.com



PRODUCT RANGE : •Pre-Laminated & Plain Particle Board •Pre-Laminated & Plain MDF & HDHMR Board •BOILO - BWP HDF Board •HDHMR Door •HDF Laminated Flooring •Embossed HDF Board •UV Coated Board •High Gloss Acrylic Board •Door Skins



HDF BASED EMBOSSED DECORATIVE PANELS



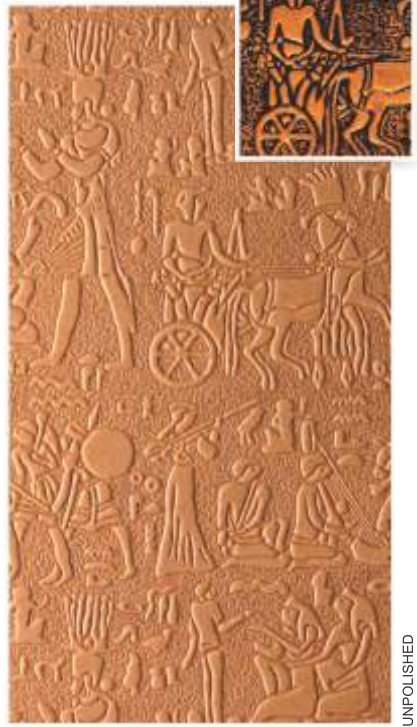
Shade No.: 401



UNPOLISHED

BRICKS

Shade No.: 403



UNPOLISHED

EGYPTA

Shade No.: 405



UNPOLISHED

BARK

Shade No.: 412



UNPOLISHED

CUBOID

Shade No.: 413



UNPOLISHED

FLORINA

Shade No.: 414



UNPOLISHED

PLUME

Shade No.: 407



UNPOLISHED

NATURA

Shade No.: 410



UNPOLISHED

WEB

Shade No.: 411



UNPOLISHED

CROWN TEAK

Shade No.: 415



UNPOLISHED

VEINS

Shade No.: 416



UNPOLISHED

BAMBOO MAT

Shade No.: 418



UNPOLISHED

FLORA

Shade No.: 422



UNPOLISHED

FERN

Shade No.: 423



UNPOLISHED

VENIA

Shade No.: 425



UNPOLISHED

CHESS

Shade No.: 429



UNPOLISHED

BUTTERFLY

Shade No.: 430



UNPOLISHED

FABRIC

Shade No.: 431



UNPOLISHED

DOTS

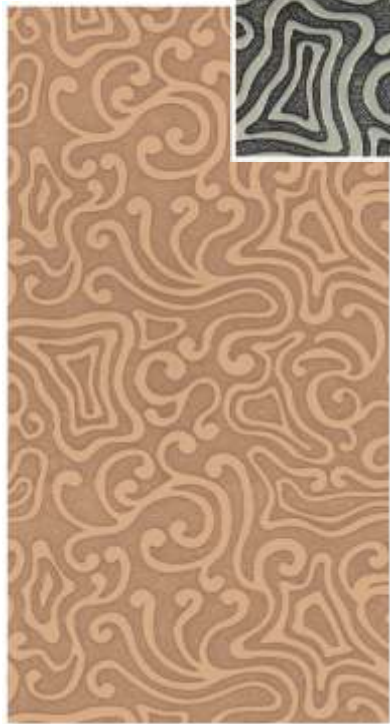
Shade No.: 426



UNPOLISHED

PETAL

Shade No.: 427



UNPOLISHED

AMOEBE

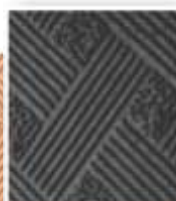
Shade No.: 428



UNPOLISHED

TIDE

Shade No.: 432



UNPOLISHED

WEAVE TEXTURE

Shade No.: 433



UNPOLISHED

TARANG

Shade No.: 434



UNPOLISHED

LEAF

Shade No.: 435



MATS

Shade No.: 436



HONEYCOMB

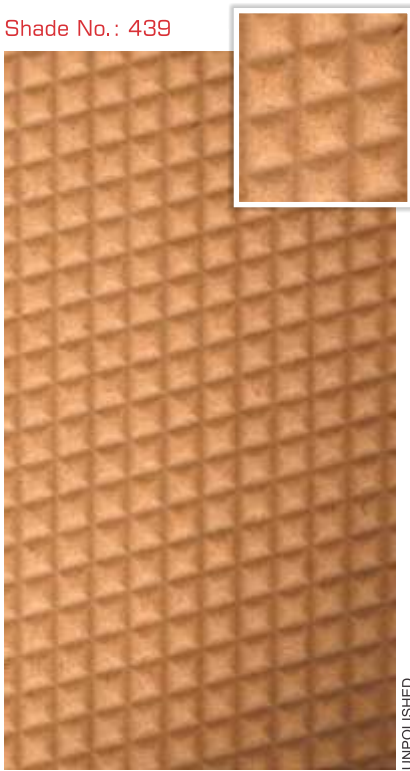
Shade No.: 438



SANDMARKS



Shade No.: 439



KNURL

Shade No.: 440



SPIRALS

Shade No.: 441



SWIRL

Shade No.: 442



TREAD MARK

Shade No.: 443



FLORAL



Shade No.: 446



VINE

Shade No.: 447



BLADE

Shade No.: 448



CLOUD

Shade No.: 449



JASMINE

Shade No.: 450

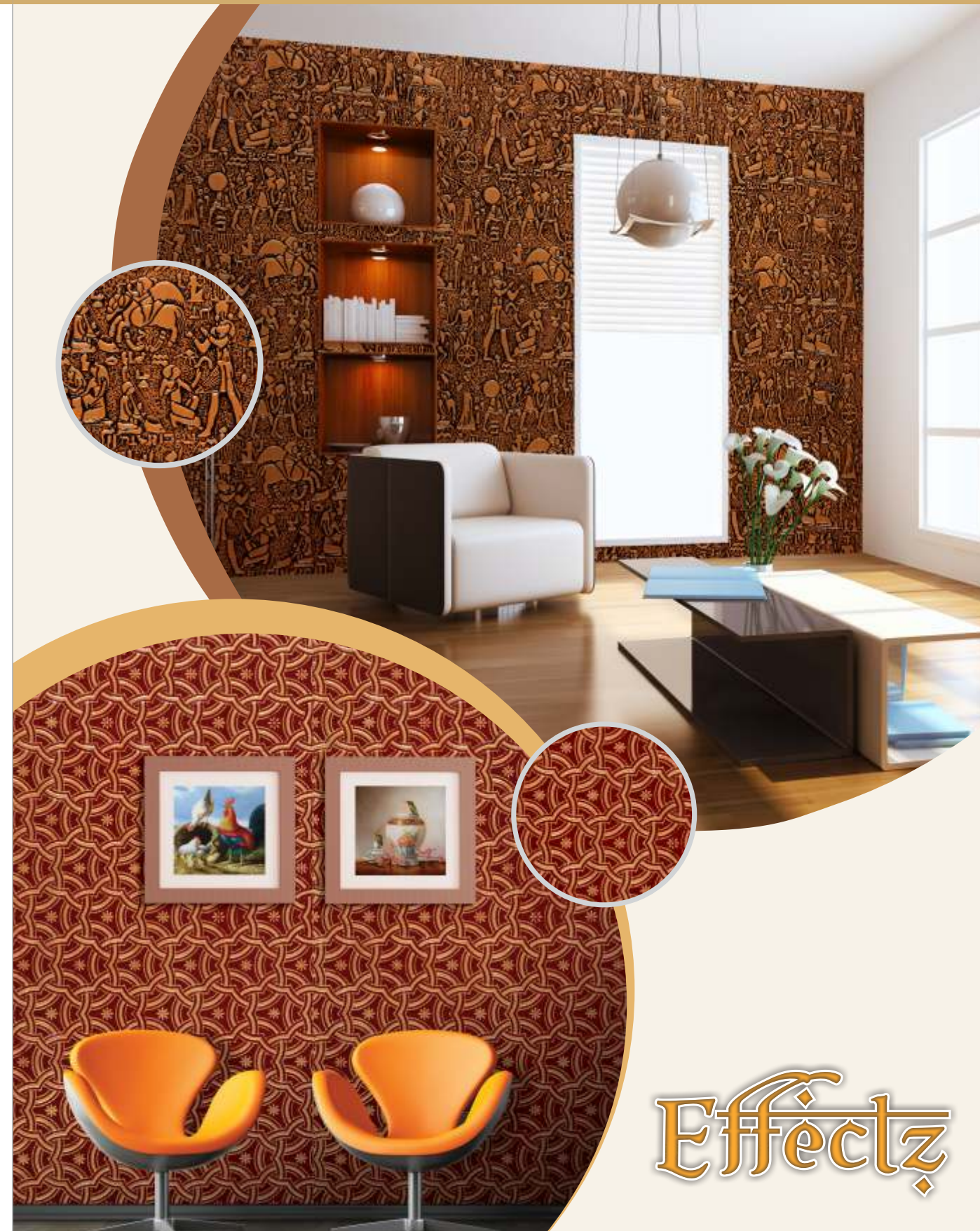


STENCIL

Shade No.: 451



CURLLED



Effectz

# POLISHING TECHNIQUE

## GOLDEN ANTIQUE EMBOSSED FINISH POLISH

- Mix sealer & lacquer in 2:1 ratio. Should the mix become thick use thinner to dilute the mix. The sealer & lacquer mix is to be applied 3–4 times by hand using a cloth. Wait for the sealer & lacquer coat to dry.
- For a 8ft x 4ft sheet of Embossed HDF 1litre of Thinner, 80grms of any metallic or standard non-metallic colour tint & 250 grams of lacquer is mixed. Apply 3 coats of this mix on the surface of the Embossed HDF uniformly by hand using a soft cloth dab. One should be careful to see that no place remains uncoated.
- After this apply 3 coats of sealer & lacquer mix & leave it to dry. (Sealer & Lacquer mixer is same as used in step 1)
- To give an antique effect contrasting dark colours, like black, grey, dark red, brown depending upon the base colour applied earlier, is mixed in proportion to attain the desired antique effect with 250grms of spirit & 100 grams of Lakh dana. This mix is then applied a single coat on the surface of the embossed HDF which already has a base colour duly sealed.
- With a soft cotton cloth using only spirit the dark tone applied earlier is softly wiped of the surface of the raised surfaces only. This is a delicate process & care needs to be taken that no extra pressure is applied while cleaning or else the dark colour in the depths too shall come off.
- To permanently fix of the antique coat a layer of spirit & lakh dana is given & left to dry
- Then to finally clean the surface gently wipe the raised surfaces with spirit with soft hands using a clean cotton cloth.
- Then to fix the total panel a final coat of sealer & lacquer in 2:1 ratio as above is applied & left to dry. Once the sealer & lacquer coat is sufficiently dry a coat of glossy/mat lacquer is applied using compressed air spray to give a final 2 tone antique finish to the panel.

## गोल्डन एन्टिक एम्बोस्ड फिनिश पोलिश

- सिल्लर और लैकर तीन से चार कोट लगाया जाता है। 2:1 की रेशो से सिल्लर और लैकर को मिक्स करना है, कोट हाथ से लगेगा एवं कपड़े का इस्तेमाल करे।  
नोट: सिल्लर, कलर, और लैकर के घोल को पतला करने के लिए थिन्नेर का उपयोग करे।
- सूखने का इंतजार करे।
- एक 8'x4' के बोर्ड के लिए 80 ग्राम गोल्डन कलर, थिन्नेर 1 लिटर एवं 250 ग्राम लैकर को मिक्स करके लगाएंगे।
- लैकर थिन्नेर और कलर तीनों को मिक्स करके दो से तीन कोट लगाये जाते हैं।
- लैकर सिल्लर की पारदर्शी कोटिंग दो से तीन बार की जाती है और सूखने के लिए छोड़ देते हैं। (लैकर और थिन्नेर वही है जो आपने पहली बार इस्तेमाल किया था)
- स्पिरिट 250 ग्राम और लाखदाना 100 ग्राम का मिश्रण कजल के साथ मिलाकर लगाना है, थोड़ी देर बाद सूखने के बाद। कोटन के कपड़े से कजल को स्पिरिट से हल्के हाथ से साफ करते हैं। (ऊपर उठे हुए हिस्से से कजल साफ हो जाएगा)
- सफाई के बाद लाखदाना स्पिरिट के मिश्रण का एक कोटिंग करेंगे, ऐसा करने से इसके अन्दर का कजल पक्का हो जाएगा।
- स्पिरिट के साथ फाईनल सफाई करते हैं। (ऊपर उठा हुआ हिस्सा साफ हो जाएगा)
- लैकर और सिल्लर से फाईनल कोटिंग करेगे क्योंकि ऐसा करने से कलर पक्का हो जाएगा।
- सूखने के बाद ग्लोसी, मैट, लैकर से फाईनल फिनिश कम्प्रेसर द्वारा करें, दो से तीन कोट इच्छा अनुसार करे जा सकते हैं। फाईनल इम्बोस्ड कोटिंग पूरी हो जाती है, उसके बाद टुटोन इफैक्ट दिखने लगता है।

# STEP OF POLISHING

- 1 सबसे पहले एम्बोस्ड शीट को सूती कपड़े से साफ करें।**  
First Clean Embossed Sheet with Cotton Cloth.
- 2 साफ की हुई एम्बोस्ड शीट पर सिल्लर की दो बार या उससे अधिक जरूरत के हिसाब से कोटिंग करें।**  
Do the Sealer Coating 2 Time or More on Clear Embossed Sheet as Per Your Requirement.
- 3 सूखने के बाद डिको कलर (गोल्डन) (पाउडर + लैकर + थिन्नेर) पूरी शीट पर करें।**  
Apply the Deco Color (Golden) After Soaking the Coats. **(Powder + Lacquer + Thinner)**
- 4 सूखने के बाद डिको कलर पर लैकर की दो बार या उससे अधिक जरूरत के हिसाब से कोटिंग करें।**  
After Soaking Coats, Apply Lacquer on Deco Color Coating 2 Time or More As Per Your Requirement.
- 5 स्पिरिट पोलिश और काला पाउडर मिलाकर पूरी शीट पर लगा दें।**  
After Mixing the Spirit Polish And Black Powder Apply on Whole Sheet.
- 6 स्पिरिट पोलिश को स्पिरिट और सूती कपड़े से हल्के हाथ से साफ करें**  
Clean Gently the Spirit Polish with Spirit & Cotton Cloth.
- 7 साफ करने के उपरान्त शीट पर लेक्कर की कोटिंग करें।**  
Apply Lacquer Coating After Cleaning the Sheet.
- 8 अन्त में ग्लोसी, मैट, सैमी ग्लोसी फिनिश की आप इच्छानुसार कोटिंग कर सकते हैं।**  
At the End of the Coating Use Glossy, Mat, Semi Glossy Finish as Per Your Requirement.

